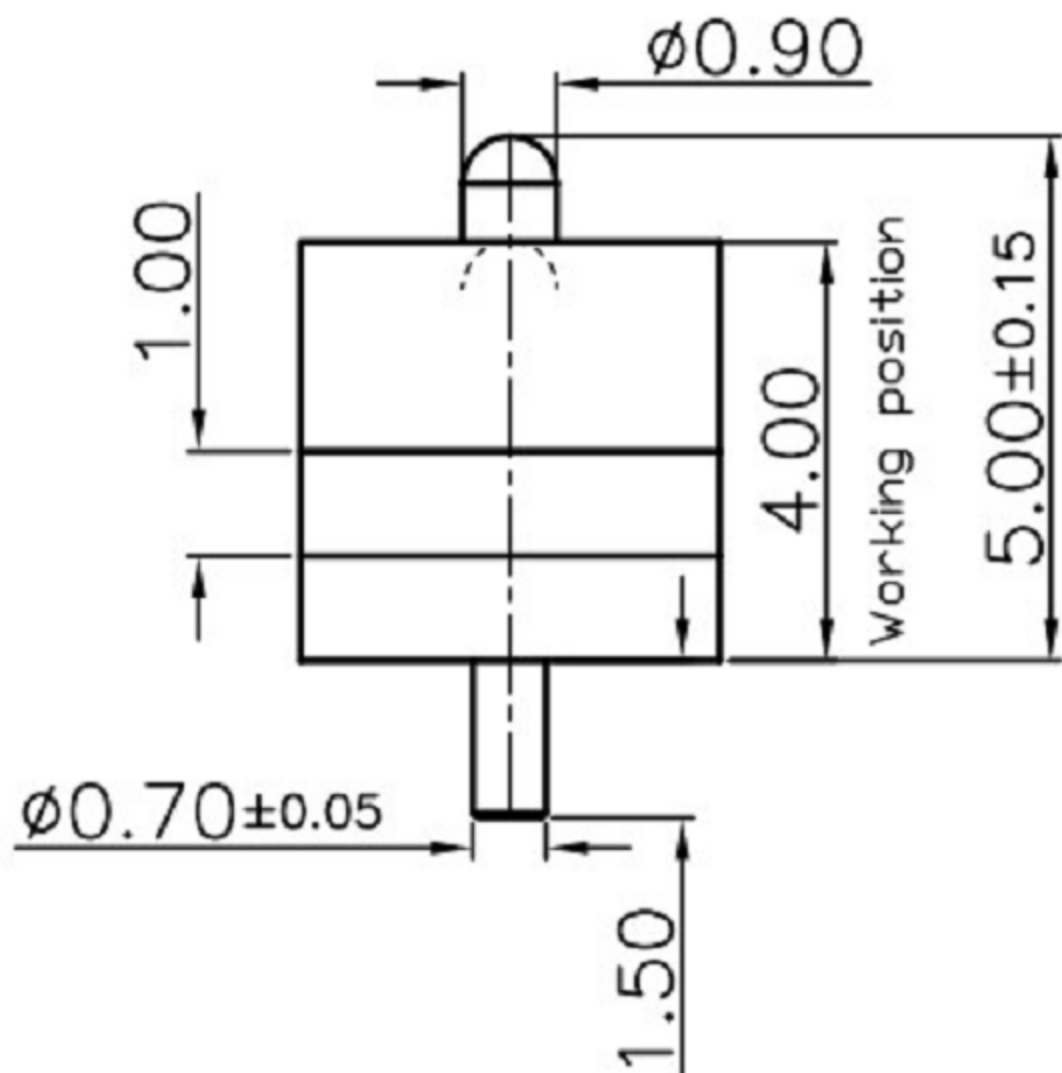
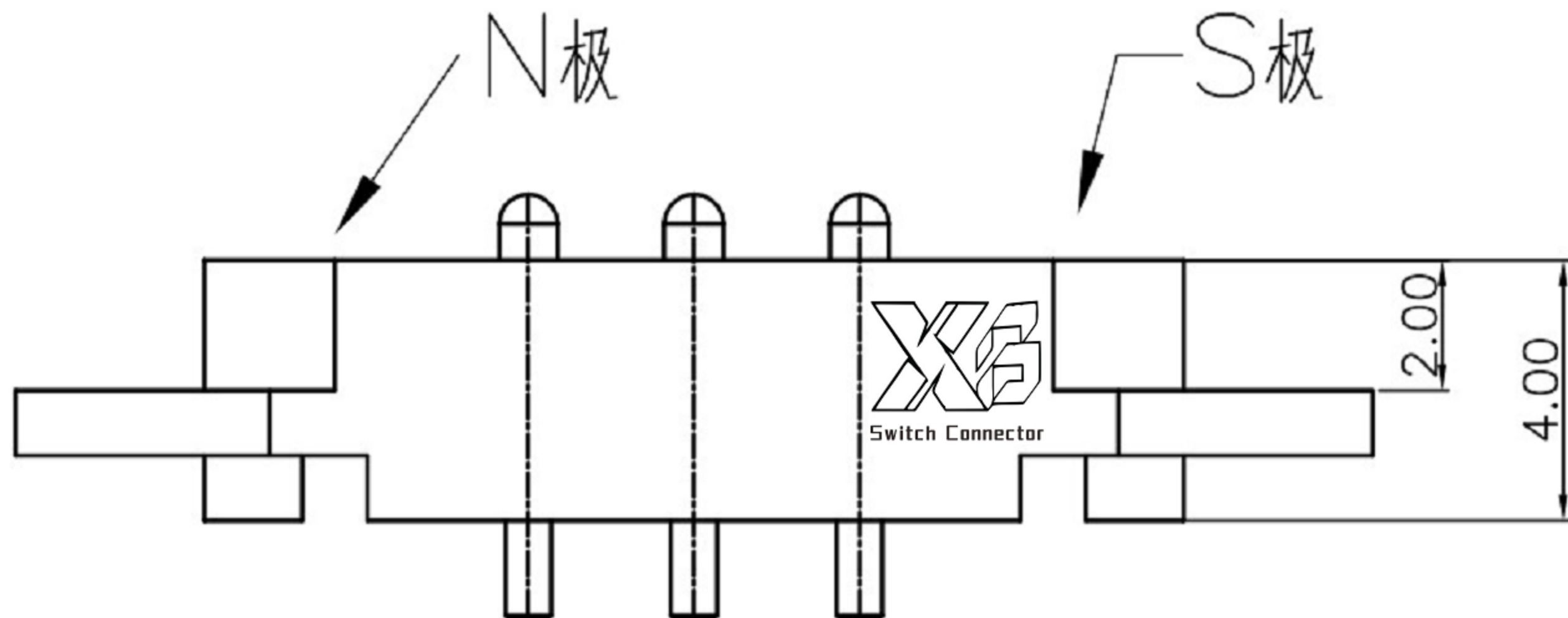


Recommended layout
General tolerance: ±0.05mm

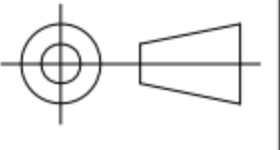


- NOTE
- 1.Material
Plunger: Brass
Barrel: Brass
Spring: SUS
Housing: PA46
 - 2.Plating
Plunger: Au over NI
Barrel: Au over NI
 - 3.Electrical
Rated current & voltage: DC 12V; 2.0A Max.
 - 4.Mechanical
Spring force: 60g±20% at normal working height
Durability: 10,000 cycles(minimum)
 - 5.To ensure the best usage,please operateit based on the working height Based on the engineering drawings,shall not exceed the maximum allowed compression
 - 6.To avoid arcing issue, The adaptor startto power supply after connector mated fully.



东莞市溪榜电子有限公司

DONG GUAN XI BANG ELECTRONI CS CO., LTD.

TOLERANCE UNLESS OTHERWISE STATED :	Up to 5 ±0.2 Above 5 ~ 15 ±0.3 Above 15 ~ 30 ±0.4 Above 30 ~ 50 ±0.5 Angle ±0.3°	3RD. ANGEL'S		UNITS	MM
-------------------------------------	--	--------------	---	-------	----

DRAWN BY:	DATE	MAT'L		TITLE	CONNECTOR
Jack Lu	04/01/21				
CHECKED BY:	DATE	FINISH		MODLE	POGO PIN
Jacky Chen	04/01/21				
APPROVED BY:	DATE	SCALE	1 : 1	DWG NO.	XB-PGC-CT-301G-E
Tony Kao	04/01/21	SHEET NO.	1 of 1	PART NO.	Magnetic PoGo Pin
					SIZE A4
					VER R