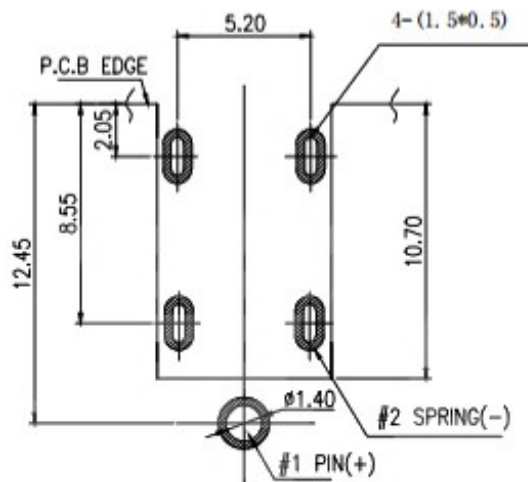
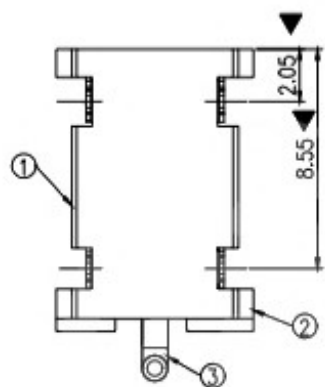
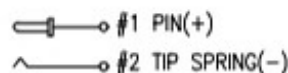


料号说明:

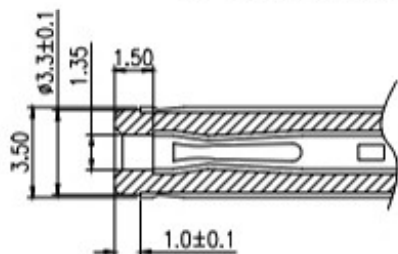
序号	产品料号	DIM
1	DC-184-08	0.80
2	DC-184-13	1.30
3	DC-184-15	1.50



RECOMMENDED PCB LAYOUT  
TOP VIEW (TOLERANCE:±0.05)



ELECTRICAL CIRCUIT



MATE PLUG

SPECIFICATIONS:

- ELECTRICAL CHARACTERISTICS:
  - RATING: 24V 3A
  - CONTACT RESISTANCE: 30mΩ MAX.(INITIAL)
  - DIELECTRIC WITHSTANDING VOLTAGE: 500V AC FOR ONE MINUTE
  - INSULATION RESISTANCE: 100M MIN. MEASURED BY 500V DC
- MECHANICAL CHARACTERISTICS:
  - INSERTION FORCE : 0.3~3.0 KGF
  - WITHDRAWAL FORCE : 0.3~3.0 KGF
- LIFE TEST: 5,000 CYCLES MIN.
- FOR REFLOW SOLDERING LEAD-FREE PROCESS.

ITEM	NAME	Q'TY	DESCRIPTION	NOTE
3	SHELL	1	PHORPHOS BRONZE; THE BOTTOM OF THE NICKEL(40u*MIN.); THE WHOLE GOLD FLASH PLATING	
2	CONCTOR PIN	1	BRASS; THE BOTTOM OF THE NICKEL(40u*MIN.); THE WHOLE GOLD FLASH PLATING.	
1	HOUSING	1	PART COLOR BLACK	

PART NAME		DC POWER JACK		DRAWING	Y,C,ZHANG	DWG.No.	SBICL
PART NO.				CHECK	G.C.Chen	REV.	A1
UNIT :	TOLERANCE	UP TO 5	±0.2	ANGLE	APPROVAL	DATE	PAGE
	mm	OTHERWISE	ABOVE 5~30				
		ABOVE 30	±0.5				
		ANGLE	±3'				