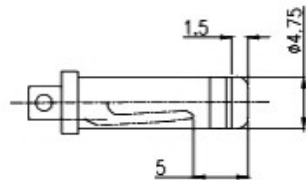
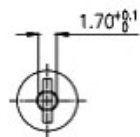


A-A' SECTION



MATING PLUG $\phi 5.50$



SCHEMATIC



SPECIFICATIONS

- ELECTRICAL CHARACTERISTICS:
 - 1-1.RATING: DC 20V 7A
 - 1-2.CONTACT RESISTANCE: 30mΩ MAX(INITAL)
 - 1-3.DIELECTRIC WITHSTANDING VOL TAGE: 500V AC FOR ONE MINUTE
 - 1-4.INSULATION RESISTANCE: 100MΩ MIN,MEASURED BY 500V DC
- MECHANICAL CHARACTERISTICS:
 - 2-1.INSERTION FORCE: INITIAL:1.0KGf-3.0KGf.
 - 2-2.WITHDRAWAL FORCE: INITIAL:1.0KGf-3.0KGf.
- LIFE TEST:5,000 CYCLES MIN
- PACKING:TAPE & REEL
- FOR HAND SOLDERING LEAD FREE PROCESS

No.	DESCRIPTION	MATERIAL	PLATING
A	BODY	PPA	BLACK COLOR
B	TIP SPRING	C5210	Ag:20u" Min Over Ni60u" Min
C	TERMINAL	SUS	N/A
D	PIN	BRASS	Gold Flash Over Ni60u" Min
E	SHIELDING	C2680	Ni 60u" Min
F	GROUND	SUS	N/A

DONG GUAN XI BANG ELECTRONIC CO., LTD

COPYRIGHT RESERVED,PLEASE DO NOT COPY.

PART NAME	DC POWER JACK		DRAWING	DWG.No.	
PART NO.			CHECK	REV.	A0
UNIT: mm	TOLERANCE UNLESS OTHERWISE SPECIFIED	X ± 0.3 X.X ± 0.25 X.XX ± 0.2	ANGLE	APPROVAL	DATE
			±2'	SCALE	PAGE
				1:1	1 OF 1