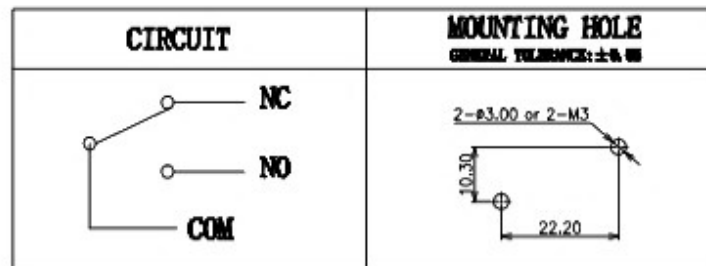
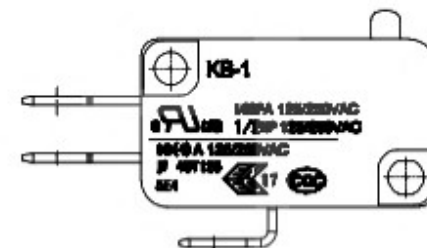
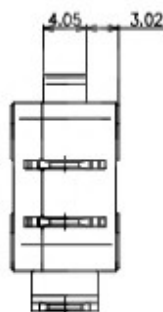
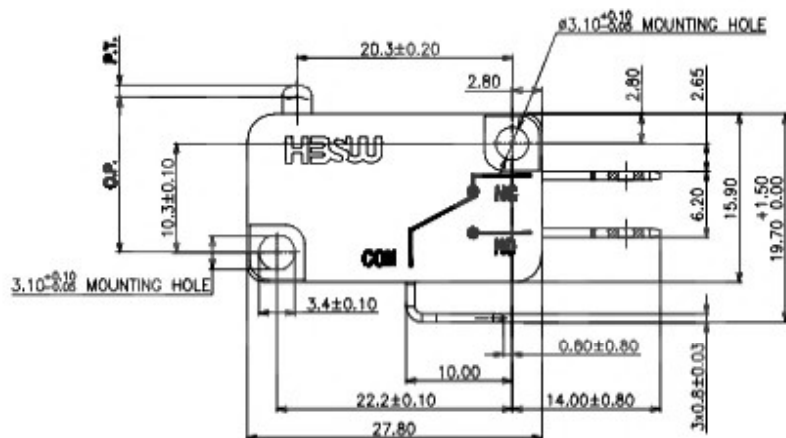
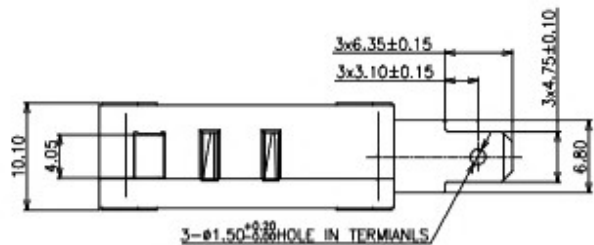


NOTES:

- 1 MOUNTING HOLES WILL ACCEPT $\phi 3$ MAX PINS OR SCREWS.
- 2 - TERMINALS WILL ACCEPT 4.7 WIDE QUICK CONNECT RECEPTACLES AND COMPLY WITH EN61058-1 REQUIREMENTS.



CHARACTERISTICS	ELECTRICAL DATA
OPERATING FORCE: 300 gf max.	CONTACT ARRANGEMENT SPDT
DIFFERENTIAL FORCE: 50 gf min.	
RELEASE FORCE: 50 gf min.	100VA 120VAC-254 40T25 μ 100VA 120VAC-254 40T25 μ 100VA 120VAC 1/2HP 120VAC
FREE POSITION:	
OPERATING POSITION: 14.7±0.50 mm.	
PRE-TRAVEL: 1.60 mm max.	
DIFFERENTIAL TRAVEL: 0.40 mm max.	
OVER-TRAVEL: 0.80 mm min.	
FULL OVERTRAVEL FORCE:	



COPYRIGHT RESERVED, PLEASE DO NOT COPY.

PART NAME	Micro Switch	DRAWING	Y.C.ZHANG	DWG.No.	SBICL
PART NO.	KB-16-00N-300-1	CHECK	G.C.Chen	REV.	A1
UNIT : mm	TOLERANCE	UP TO 5	±0.2	ANGLE	APPROVAL
	OTHERWISE	ABOVE 5 ~ 30	±0.3	0°±3'	SCALE
		ABOVE 30	±0.5		2:1
		ANGLE	±3'		PAGE
					1 OF 1