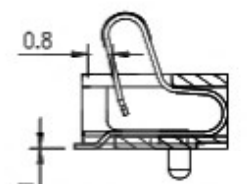
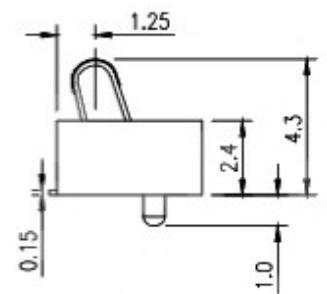
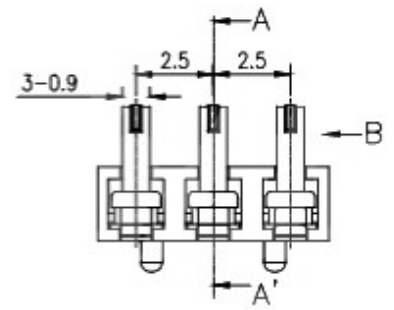
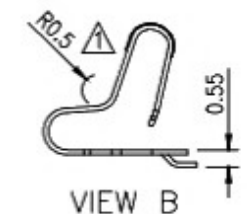


**SPECIFICATIONS**

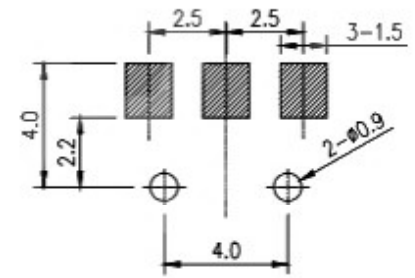
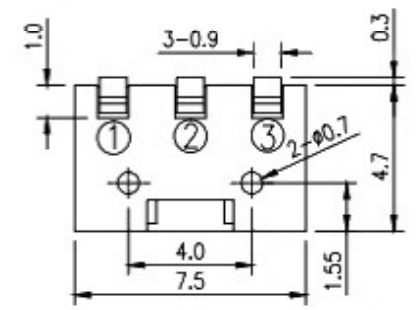
1. ELECTRICAL CHARACTERISTICS:
  - 1-1.RATING: DC 20V 3A max
  - 1-2.CONTACT RESISTANCE: 20mΩ MAX(INITAL)
  - 1-3.DIELECTRIC WITHSTANDING VOLTAGE: 500V AC FOR ONE MINUTE
  - 1-4.INSULATION RESISTANCE: 100MΩ MIN, MEASURED BY 500V DC
2. LIFE TEST:MECHANICAL LIFE TEST 10,000 CYCLES MIN
3. TEMPERATURE RISE : 30°C MAX



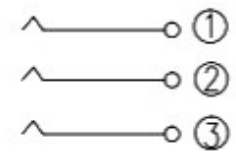
VIEW A-A'



VIEW B



P.C.B LAYOUT



CIRCUIT

2	HOUSING	LCP	1	BLACK
1	CONTACT TERMINAL	BeCu	3	Au PLATED
NO.	PARTS	MATERIAL	QTY.	FINISHING

PART NAME		CONNECTOR		DRAWING	Y,C,ZHANG	DWG.No.	SBICL
PART NO.				CHECK	G.C.Chen	REV.	A1
UNIT :	mm	TOLERANCE OTHERWISE	UP TO 5	±0.2	APPROVAL	DATE	28-06-2019
			ABOVE 5 ~30	±0.3			
			ABOVE 30	±0.5	SCALE	PAGE	1 OF 1
			ANGLE	±3'			