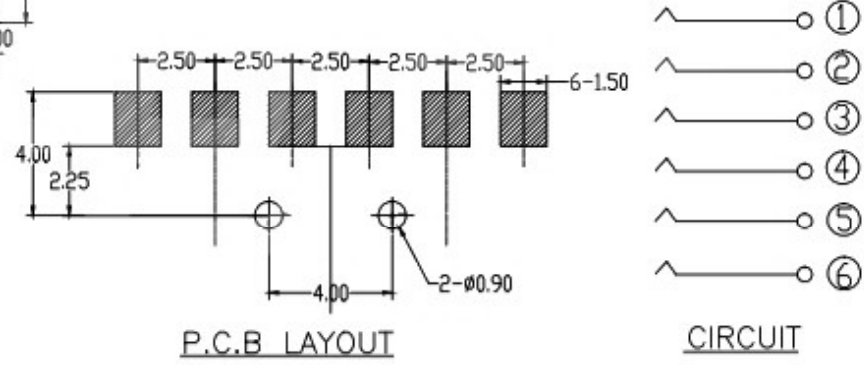
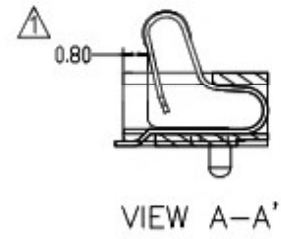
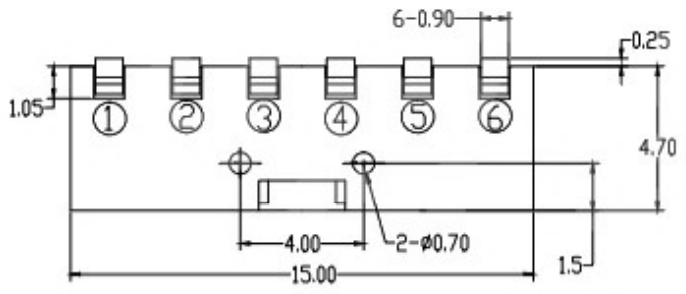
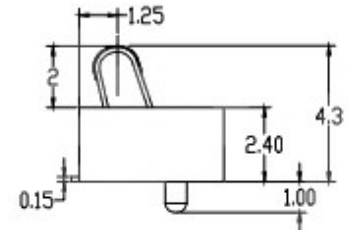
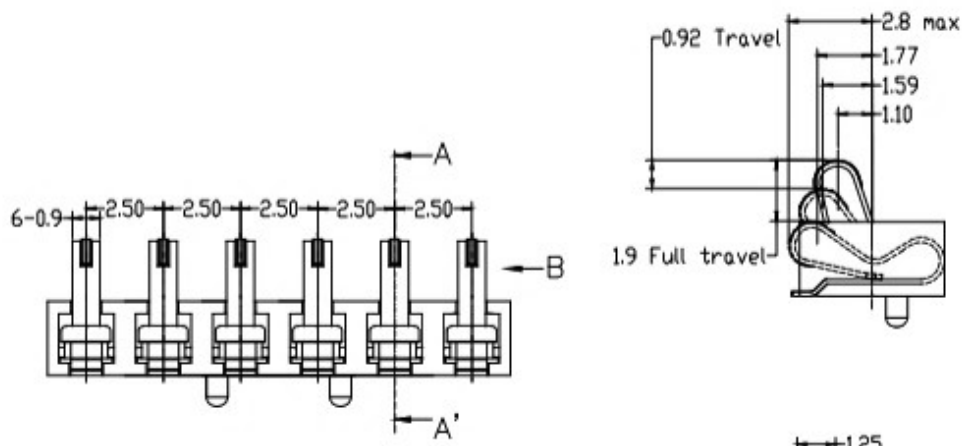



### SPECIFICATIONS

- ELECTRICAL CHARACTERISTICS:
  - 1-1.RATING: DC 12V 2A
  - 1-2.CONTACT RESISTANCE: 20mΩ MAX(INITAL)
  - 1-3.DIELECTRIC WITHSTANDING VOLTAGE: 500V AC FOR ONE MINUTE
  - 1-4.INSULATION RESISTANCE: 100MΩ MIN, MEASURED BY 500V DC
- LIFE TEST:MECHANICAL LIFE TEST 20,000 CYCLES.
- TEMPERATURE RISE : 30°C MAX



2	HOUSING	PPA	1	BLACK
1	CONTACT TERMINAL	BeCu	6	Au PLATED
NO.	PARTS	MATERIAL	QTY.	FINISHING

 UNIT : mm	PART NAME		CONNECTOR		DRAWING	Y.C.ZHANG	DWG.No.	SBICL
	PART NO.				CHECK	G.C.Chen	REV.	A1
	TOLERANCE OTHERWISE	UP TO 5 ABOVE 5 ~30 ABOVE 30 ANGLE	±0.2 ±0.3 ±0.5 ±.3°	ANGLE	APPROVAL		DATE	28-06-2019
				0°±3'	SCALE	2:1	PAGE	1 OF 1