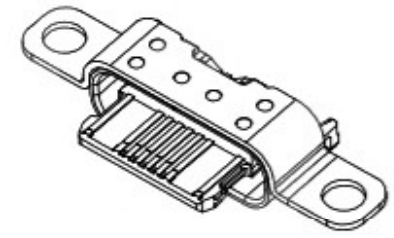
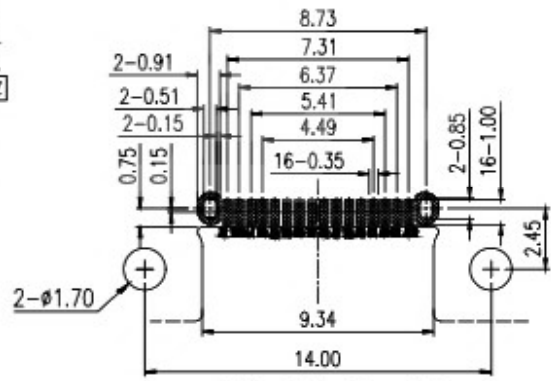
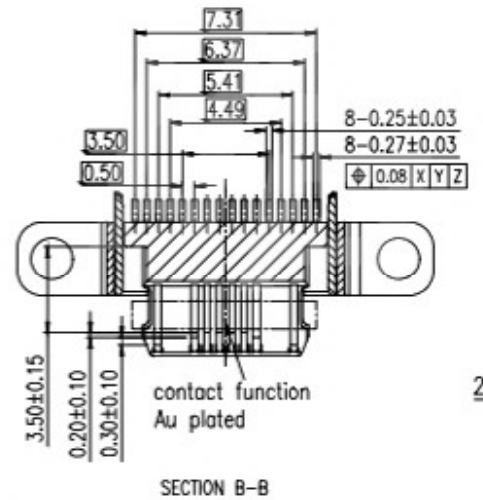
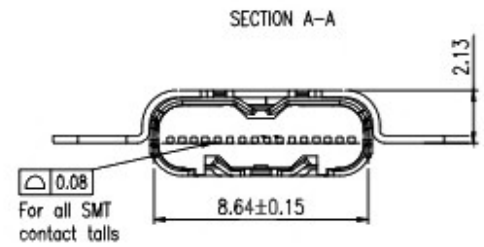
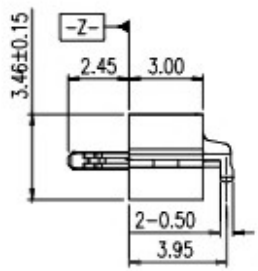
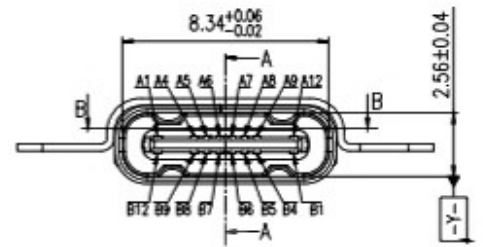
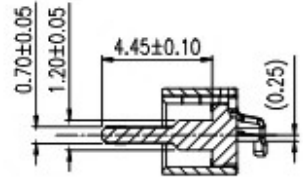
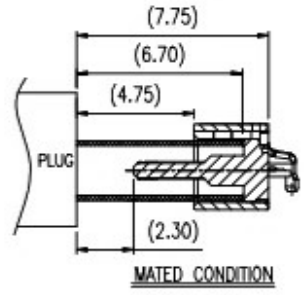
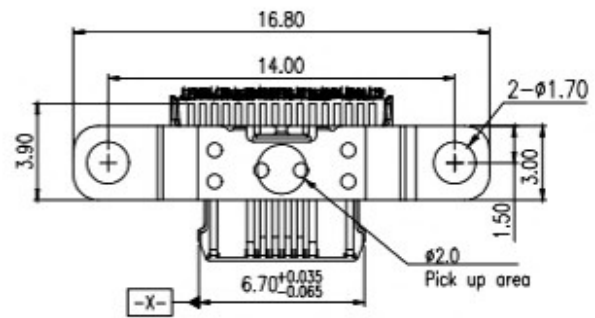


- NOTES:
- Rated current:  
Pin A1,A12 and B1,B12 total 8A Max  
Pin A4,A9 and B4,B9 total 8A Max  
Other Pin 0.25A Max
  - Rated voltage:30V AC
  - Contact resistance:  
Initial: 40mΩ Max  
After durability: 50mΩ Max
  - Withstanding strength:100V AC for 1 minute
  - Insulation resistance: 100MΩ Min. 1 minute
  - Mechanical characteristics:  
Insertion force:Initial 5N-20N,  
After 10k cycles 5-20N  
Extraction force:Initial 8N-20N,  
After 1k cycles 8-20N,After 10k cycles 6-20N
  - Durability: 10K cycles
  - Operation Temperature Range:  
-40 °C - 85 °C
  - Salt spray:48 hours



PIN ASSIGNMENTS:

PIN	A1	A4	A5	A6	A7	A8	A9	A12
Signal Name	GND	V <sub>BUS</sub>	CC1	Dp1	Dn1	SBU1	V <sub>BUS</sub>	GND
PIN	B12	B9	B8	B7	B6	B5	B4	B1
Signal Name	GND	V <sub>BUS</sub>	SBU2	Dn2	Dp2	CC2	V <sub>BUS</sub>	GND

5	OUT SHELL	1PCS	STAINLESS STEEL	50u" MIN SOLDERABLE NICKEL
4	SHELL	1PCS	STAINLESS STEEL	50u" MIN SOLDERABLE NICKEL
3	CONTACT	1SET	COPPER ALLOY	GOLD 30U" Min PLATED ON CONTACT AREA AND G/F ON SOLDER TAILS OVER 50u" Min NICKEL UNDERPLATING OVERALL
2	MID-PLATE	1PCS	STAINLESS STEEL	NO PLATING
1	HOUSING	1PCS	THERMOPLASTIC	BLACK COLOR, UL94 V-0
ITEM	PART NAME	Q'TY	MATERIAL	FINISH



COPYRIGHT RESERVED,PLEASE DO NOT COPY.

PART NAME	CONNECTOR			DRAWING	Y,C,ZHANG	DWG.No.	SBICL
PART NO.	USB 2.0 Type C 16PIN Pro7 Note9			CHECK	G.C.Chen	REV.	A1
UNIT : mm	TOLERANCE OTHERWISE	UP TO 5	±0.2	APPROVAL	SCALE	DATE	PAGE
		ABOVE 5~30	±0.3			1 OF 1	
		ABOVE 30	±0.5		2:1		
		ANGLE	±5				