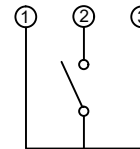


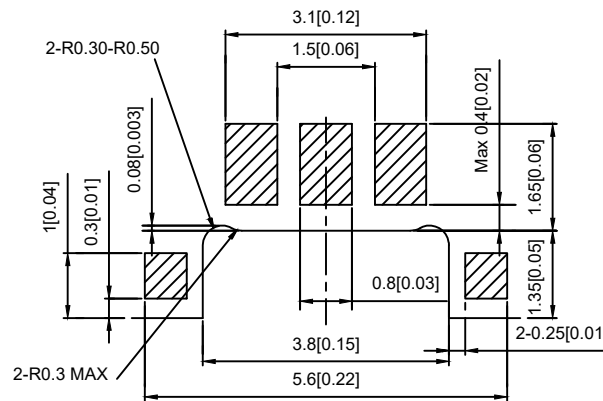
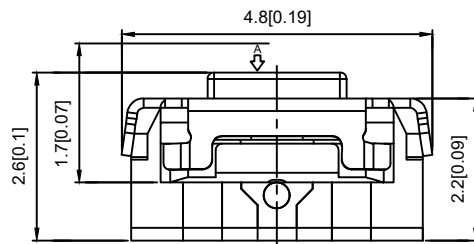
CIRCUIT DIAGRAM



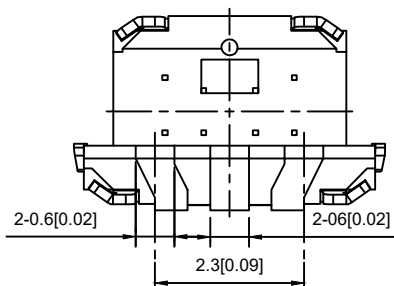
**SPECIFICATION**

Contact Rating: 50mA,12V DC  
 Contact Resistance: 100mΩ max  
 Insulation Resistance: 100mΩ min.500V DC  
 Dielectric Strength: 250V AC/1minute  
 Travel: 0.20mm  
 Operating Temp: -30℃~+85℃  
 Storage Temp: -30℃~+80℃

PAPT NO	TS-1134A-X
Operating Force	B:160gf C:260gf
Height	H:1.7



**P.C.B LAYOUT**  
 VIEW FROM THE DIRECTION A



⑤	Terminal	—	3	Brass (0.30t)	Plating silvering	—
④	Contact	—	1	F.ag/Sus	Natural	—
③	Base	—	1	Lcp		—
②	Cover	—	1	Brass	Plating Nickel	—
①	Keystake	—	1	Lcp		—
ITEM	PAPT NAMF	TER,NO	QTY	MATERIAL	FINISHING	REMARK

DSND		DATE		SCALE: N/A	MODEL TYPE: <b>TACT SWITCH</b>
DWN		DATE		VIEW:	PART NO.:
CHKD		DATE		UNIT: mm/in	DWG NO.:
APPD		DATE		SIZE: A4	<b>TS-1134A-X</b>
				<b>DONG GUAN XI BANG ELECTRONIC CO., LTD</b>	WEIGHT 1.0g
					SHEET 1/1
					REVISION A0

					units: mm
ΔX					tolerance: X.X ±0.2mm
ΔX					X.XX ±0.1mm
ΔX					X.XXX ±0.05mm
MARK	DESCRIPTION	DATE	REVISED	APPROVED	UNSPECIFIED TOLERANCES
REVISIONS					
www.alpsr.com www.gdxjdz.com www.xbswitch.com					