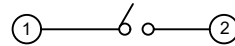
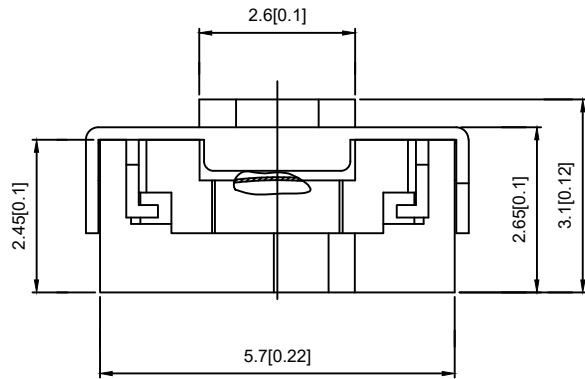


PCB.WELDING DRAWING

**SPECIFICATION**

Contact Rating: 50mA, 12V DC  
 Contact Resistance: 100mΩ max  
 Insulation Resistance: 100mΩ min. 500V DC  
 Dielectric Strength: 250V AC/1minute  
 Travel: 0.25mm  
 Operating Temp: -40°C ~ +90°C  
 Storage Temp: -30°C ~ +80°C



CIRCUIT DIAGRAM

PAPT NO	TS-1135-X
Operating Force	A:100gf B:160gf C:260gf

					units: mm	DSND		DATE		SCALE: N/A	MODEL TYPE: TACT SWITCH
					tolerance:	DWN		DATE		VIEW:	PART NO.:
ΔX					X.X ±0.2mm	CHKD		DATE		UNIT: mm/in	DWG NO.:
ΔX					X.XX ±0.1mm	APPD		DATE		SIZE: A4	TS-1135-X
ΔX					X.XXX ±0.05mm						REVISION
MARK	DESCRIPTION	DATE	REVISED	APPROVED	UNSPECIFIED TOLERANCES	DONG GUAN XI BANG ELECTRONIC CO., LTD					WEIGHT 1.0g
www.alpsr.com www.gdxjdz.com www.xbswitch.com											SHEET 1/1
											REVISION A0