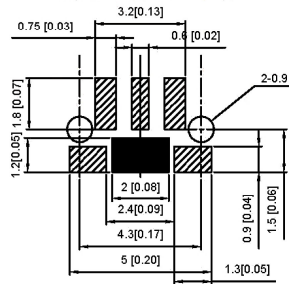


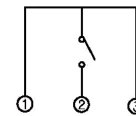
SPECIFICATION

Contact Rating: 50mA,12V DC
 Contact Resistance: 100mΩ max
 Insulation Resistance: 100mΩ min.500V DC
 Dielectric Strength: 250V AC/1minute
 Travel: 0.25mm
 Operating Temp: -30℃~+85℃
 Storage Temp: -30℃~+80℃

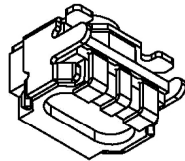
SMD REFLOW PATTERN



CIRCUIT DIAGRAM



PAPT NO	TS-1133-X-A
Operating Force	A:100gf B:160gf C:260gf
Keystake	A:PA46 B:Silica gel



⑤	Terminal	—	3	Brass (0.30t)	Plating silvering	—
④	Contact	—	1	F.ag/Sus	Natural	—
③	Base	—	1	Pa46		—
②	Cover	—	1	Spcc	Plating Nickel	—
①	Keystake	—	1	Pa46		—
ITEM	PAPT NAME	TER.NO	QTY	MATERIAL	FINISHING	REMARK

					units: mm	DSND		DATE		SCALE: N/A	MODEL TYPE: TACT SWITCH	
					tolerance:	DWN		DATE		VIEW:	PART NO.:	
ΔX					X.X ±0.2mm	CHKD		DATE		UNIT: mm/in	DWG NO	
ΔX					X.XX ±0.1mm	APPD		DATE		SIZE: A4	TS-1133-X-A	
MARK	DESCRIPTION	DATE	REVISED	APPROVED	X.XXX ±0.05mm					WEIGHT	SHEET	REVISION
REVISIONS					UNSPECIFIED TOLERANCES	DONG GUAN XI BANG ELECTRONIC CO., LTD				1.0g	1/1	A0
www.alpsr.com www.gdxyz.com www.xbswitch.com												