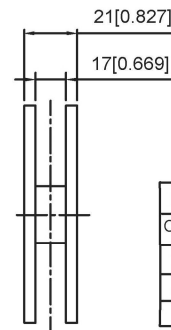
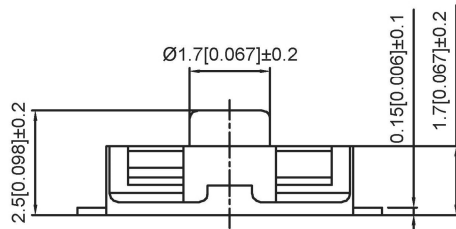
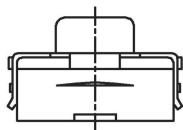
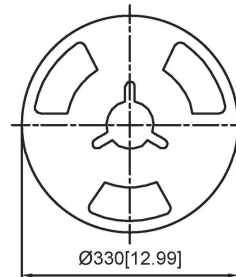


**SPECIFICATION**

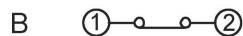
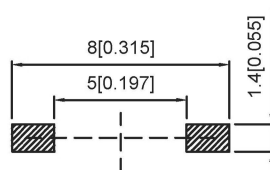
Contact Rating: 50mA, 12V DC  
 Contact Resistance: 100mΩ max  
 Insulation Resistance: 100mΩ min.500V DC  
 Dielectric Strength: 250V AC/1minute  
 Travel: 0.25mm  
 Operating Temp: -30°C~+85°C  
 Storage Temp: -30°C~+80°C



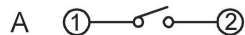
PAPT NO	TS-1105G-X-X-B
Operating Force	A:100gf B:160gf C:260gf
Height	H:2.5
color	B:black BL:blue
line	A: Normally open B:Normally closed



**P.C.B MOUTING HOLES**



**CIRCUIT DIAGRAM**



**PACKING REEL TYPE 3,000/ 1REEL(EA)**

⑤	Terminal	—	2	Brass (0.30t)	Plating silvering	—
④	Contact	—	1	F.ag/Sus	Natural	—
③	Base	—	1	Pa46		—
②	Cover	—	1	Spcc	Plating Nickel	—
①	Keystone	—	1	Silica gel		—
ITEM	PAPT NAMF	TER.NO	QTY	MATERIAL	FINISHING	REMARK

DSND		DATE		SCALE: N/A	MODEL TYPE: TACT SWITCH
DWN		DATE		VIEW:	PART NO.:
CHKD		DATE		UNIT: mm/in	DWG NO.:
APPD		DATE		SIZE: A4	TS-1105G-X-X-B
				DONG GUAN XI BANG ELECTRONIC CO., LTD	WEIGHT 1.0g
					SHEET 1/1
					REVISION A0

ΔX					units: mm
ΔX					tolerance: X.X ±0.2mm
ΔX					X.XX ±0.1mm
MARK	DESCRIPTION	DATE	REVISED	APPROVED	X.XXX ±0.05mm
					UNSPECIFIED TOLERANCES
www.alpsr.com www.gdxjdz.com www.xbswitch.com					