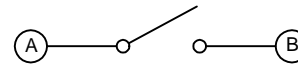
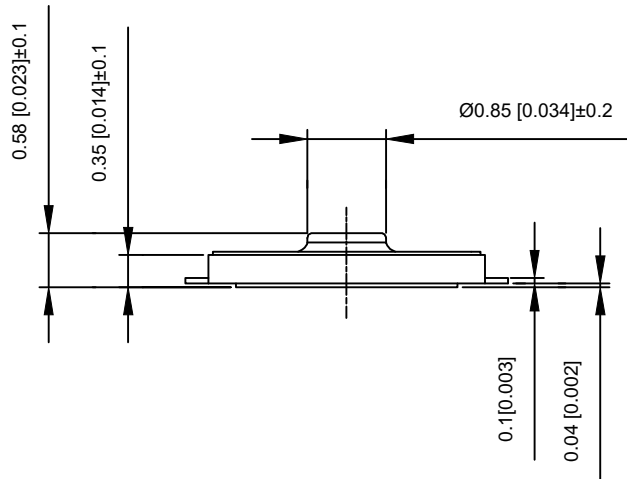


PCB SOLDER LAND DIMENSIONS

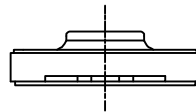
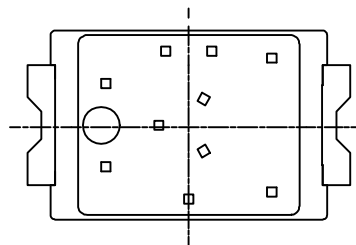
SPECIFICATION

Contact Rating: 50mA,12V DC
 Contact Resistance: 100mΩ max
 Insulation Resistance: 100mΩ min.500V DC
 Dielectric Strength: 250V AC/1minute
 Travel: 0.13mm
 Operating Temp: -30°C~+85°C
 Storage Temp: -30°C~+80°C



CIRCUIT DIAGRAM

PAPT NO	TS-2030-2-X
Operating Force	B:160gf C:260gf
Height	H:0.58



ITEM	PAPT NAMF	TER,NO	QTY	MATERIAL	FINISHING	REMARK
⑤	Terminal	—	2	Brass (0.30t)	Plating silvering	—
④	Contact	—	1	F.ag/Sus	Natural	—
③	Base	—	1	Lcp	—	—
②	Cover	—	1	Polyamide	Plating Nickel	—
①	Keystake	—	1	Pet	—	—

DSND		DATE		SCALE: N/A	MODEL TYPE:		
DWN		DATE		VIEW:	TACT SWITCH		
CHKD		DATE		UNIT: mm/in	PART NO.:		
APPD		DATE		SIZE: A4	DWG NO.:		
					TS-2030-2-X		
					WEIGHT	SHEET	REVISION
					1.0g	1/1	A0

DONG GUAN XI BANG ELECTRONIC CO., LTD