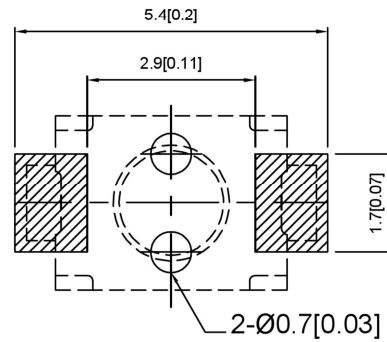
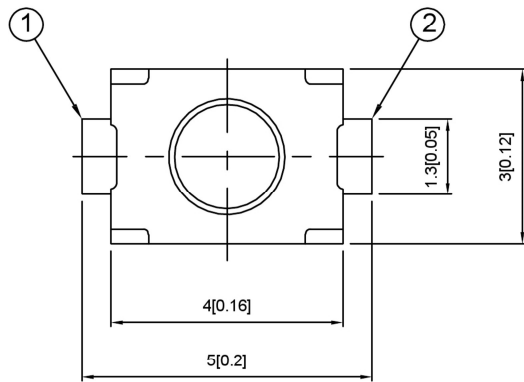


**SPECIFICATION**

Contact Rating: 50mA, 12V DC  
 Contact Resistance: 100mΩ max  
 Insulation Resistance: 100mΩ min. 500V DC  
 Dielectric Strength: 250V AC/1minute  
 Travel: 0.13mm  
 Operating Temp: -30°C~+85°C  
 Storage Temp: -30°C~+80°C

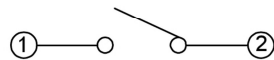
**PCB MOUNTING PATTERN DIMENSION**

The following soldering patterns are recommended for reflow soldering



PAPT NO	TS-1185-X-X-X-A
Operating Force	A:100gf B:160gf C:260gf
Height	H:A:2.0 B:2.5
Fixed column	A:With B:Without
Keystake	A:PA46 B:Silica gel

**CIRCUIT DIAGRAM**



⑤	Terminal	—	2	Brass (0.30t)	Plating silvering	——
④	Contact	—	1	F.ag/Sus	Natural	——
③	Base	—	1	LCP		——
②	Cover	—	1	Brass	Plating Nickel	——
①	Keystake	—	1	LCP		——
ITEM	PAPT NAMF	TER,NO	QTY	MATERIAL	FINISHING	REMARK

					units: mm	DSND	DATE	SCALE: N/A	MODEL TYPE: TACT SWITCH		
					tolerance:	DWN	DATE	VIEW:	PART NO.:		
					X.X ±0.2mm	CHKD	DATE	UNIT: mm/in	DWG NO		
					X.XX ±0.1mm	APPD	DATE	SIZE: A4	TS-1185-X-X-X-A		
					X.XXX ±0.05mm	DONG GUAN XI BANG ELECTRONIC CO., LTD			WEIGHT	SHEET	REVISION
REVISIONS					UNSPECIFIED TOLERANCES				1.0g	1/1	A0
www.alpsr.com www.gdxdz.com www.xbswitch.com											