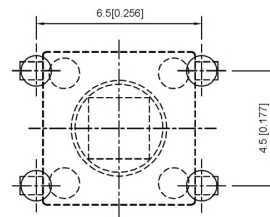
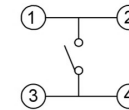


P.C.B MOUNTING PATTERN DIMENSION
The following soldering patterns are recommended for reflow soldering



CIRCUIT DIAGRAM



SPECIFICATION
Contact Rating: 50mA, 12V DC
Contact Resistance: 100mΩ max
Insulation Resistance: 100mΩ min, 500V DC
Dielectric Strength: 250V AC/1minute
Travel: 0.25mm
Operating Temp: -30°C~+85°C
Storage Temp: -30°C~+80°C

PAPT NO	TC-1102T-X
Operating force	A:100gf B:160gf C:260gf
Height	H: 7.3

ITEM	PAPT NAMF	TER NO	QTY	MATERIAL	FINISHING	REMARK
⑤	Terminal	---	4	Brass (0.30t)	Plating silvering	---
④	Contact	---	1	F ag/Sus	Natural	---
③	Base	---	1	Pa46	---	---
②	Cover	---	1	Spcc	Plating Nickel	---
①	Keystake	---	1	Pa46	---	---

					units: mm	DSND		DATE		SCALE: N/A	MODEL TYPE: TACT SWITCH		
					tolerance:	DWN		DATE		VIEW:	PART NO.:		
ΔX					X.X ±0.2mm	CHKD		DATE		UNIT: mm/in	DWG NO		
ΔX					X.XX ±0.1mm	APPD		DATE		SIZE: A4			
MARK	DESCRIPTION	DATE	REVISED	APPROVED	X.XXX ±0.05mm	DONG GUAN XI BANG ELECTRONIC CO., LTD					WEIGHT 1.0g	SHEET 1/1	REVISION A0
REVISIONS					UNSPECIFIED TOLERANCES								
www.alpsr.com www.gdxdz.com www.xbswitch.com													