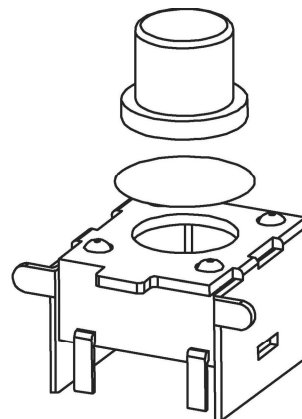


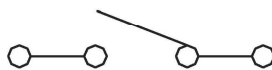
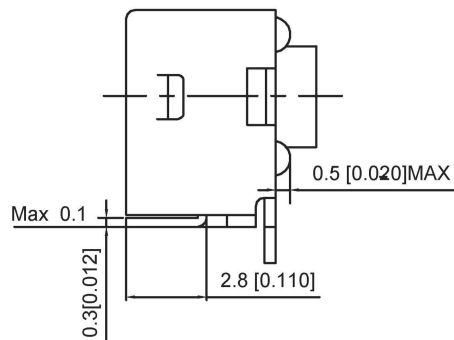
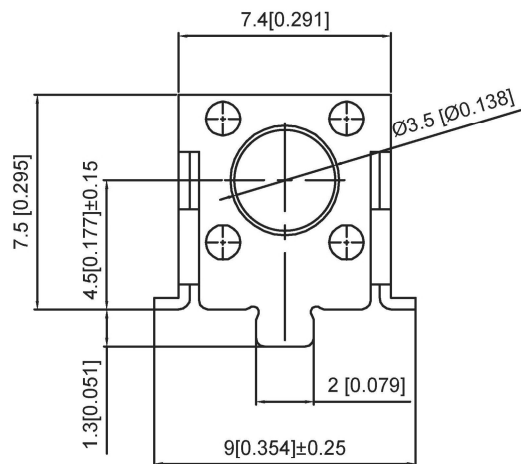
P.C.B MOUNTING HOLES



SPECIFICATION

Contact Rating: 50mA, 12V DC
 Contact Resistance: 100mΩ max
 Insulation Resistance: 100mΩ min. 500V DC
 Dielectric Strength: 250V AC/1minute
 Travel: 0.25mm
 Operating Temp: -30℃~+85℃
 Storage Temp: -30℃~+80℃

PAPT NO	TS-1103US-X-X
Operating Force	B:160gf C:260gf
Height	Code-x



CIRCUIT DIAGRAM

Code-x	H
A	4.3
B	4.5
C	5.0
D	5.5
E	6.0
F	6.5
G	7.0

⑤	Terminal	—	2	Brass (0.30t)	Plating silvering	—
④	Contact	—	1	F.ag/Sus	Natural	—
③	Base	—	1	Pa46		—
②	Cover	—	1	Spcc	Plating Nickel	—
①	Keystake	—	1	Pa46		—
ITEM	PAPT NAMF	TER,NO	QTY	MATERIAL	FINISHING	REMARK

						DSND		DATE		SCALE: N/A	MODEL TYPE: TACT SWITCH		
					units: mm	DWN		DATE		VIEW:	PART NO.:		
Δx					tolerance: X.X	CHKD		DATE		UNIT: mm/in	DWG NO TS-1103US-X-X		
Δx					X.XX ±0.2mm								
Δx					X.XX ±0.1mm	APPD		DATE		SIZE: A4	WEIGHT 1.0g		
MARK	DESCRIPTION			DATE	REVISED		APPROVED						
						UNSPECIFIED TOLERANCES						REVISION A0	
www.alpsr.com www.gdxjdz.com www.xbswitch.com						DONG GUAN XI BANG ELECTRONIC CO., LTD							