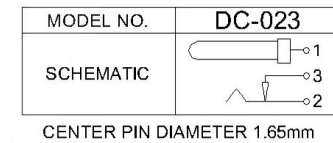
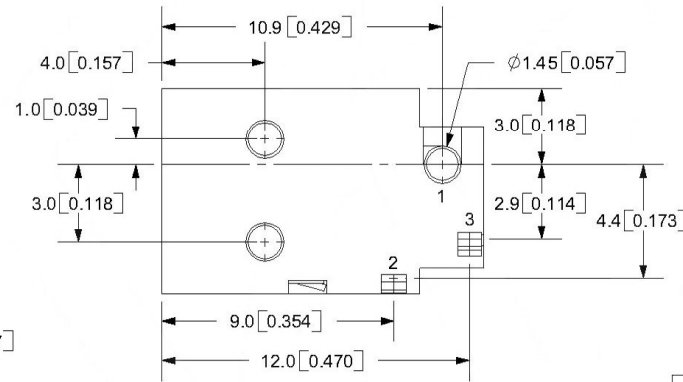
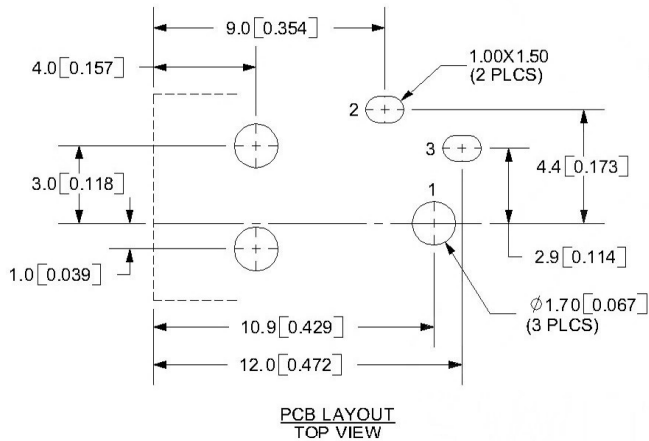


SPECIFICATIONS:
 RATING: 12V DC @ 1A
 CONTACT RESISTANCE: 30m OHMS MAX
 INSULATION RESISTANCE: 100M OHMS MIN: 500V DC
 VOLTAGE WITHSTAND: 500V AC R.M.S. FOR 1 MINUTE
 LIFE: 5,000 CYCLES
 OPERATING TEMP: -20 ° ~ +85°C



	MATERIAL	PLATING
center pin	Brass	tin
terminal 1	Brass	tin
terminal 2	Phosphor Bronze	tin
terminal 3	Brass	tin
plastic	Pbt	

MARK	DESCRIPTION	DATE	REVISED	APPROVED	ANGLAR	±5°	DSND	DATE	SCALE: N/A	MODEL TYPE: DC POWER JACK	
△x					X.X	±0.2mm	DWN	DATE	VIEW:	PART NO.:	
△x					X.XX	±0.1mm	CHKD	DATE	UNIT: mm	DWG NO.:	
△x					X.XXX	±0.05mm	APPD	DATE	SIZE: A4		
REVISIONS							UNSPECIFIED TOLERANCES				
www.switchsm.com											
									WEIGHT	SHEET	REVISION
									1.0g	1/1	A0