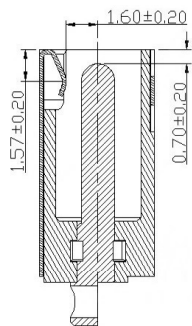
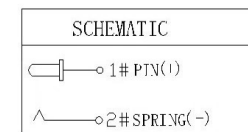
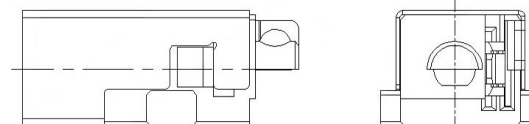
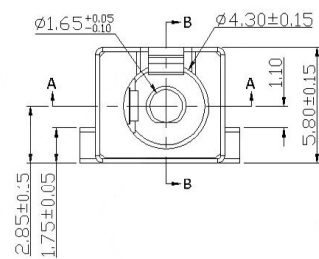
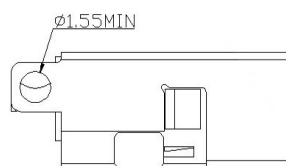
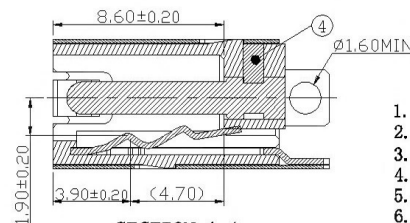
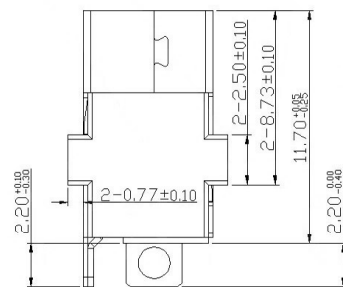


MATING PLUG



SECTION B-B



SECTION A-A

SPECIFICATION

1. Rating : DC 12V 3A;
2. Contact resistance: $\leq 0.03 \Omega$;
3. Insulation resistance: $\geq 100M \Omega$ (DC250V);
4. Withstand voltage: 500VAC ;
5. Insertion and extraction force: 5-30N;
6. life test: 5,000 cycles.
7. PLUG 插入后上下左右4个方向无间断现象。

	MATERIAL	PLATING
center pin	Brass	ag
coat	Phosphor Bronze	ni
terminal 2	Phosphor Bronze	ag
plastic	Lcp	

MARK	DESCRIPTION	DATE	REVISED	APPROVED	ANGLAR	±5°	DSND	DATE	SCALE: N/A	MODEL TYPE: DC POWER JACK			
△X					X.X	±0.2mm	DWN	DATE	VIEW:	PART NO.:			
△X					X.XX	±0.1mm	CHKD	DATE	UNIT: mm	DWG NO.:			
△X					X.XXX	±0.05mm	APPD	DATE	SIZE: A4	DC-042F-3A-1.65			
REVISIONS							UNSPECIFIED TOLERANCES	东莞市溪榜电子有限公司			WEIGHT 1.0g	SHEET 1/1	REVISION A0
www.switchsm.com													