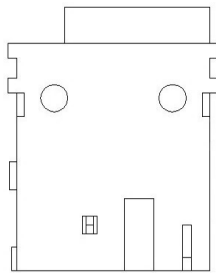


RECOMMENDED PCB LAYOUT  
TOP VIEW



NOTES:

- 1.ELECTRIC CHARACTERISTICS:
  - 1-1.CONTACT CURRENT RATING: 4A.
  - 1-2.CONTACT VOLTAGE RATING: 20V DC.
  - 1-3.CONTACT RESISTANCE: 30mΩ MAX.;
  - 1-4.DIELECTRIC WITHSTANDING VOLTAGE: 500V AC;
  - 1-5.INSULATION RESISTANCE: 100MΩ MIN.AT DC 500V.
- 2.MECHANICAL CHARACTERISTICS:
  - 2-1.DURABILITY:3000 CYCLES.
  - 2-2.INSERTION AND EXTRACTION FORCE:
    - 2-2.1.INSERTION FORCE: 30N MAX.
    - 2-2.2.EXTRACTION FORCE: 3N MIN.
- 3.ENVIRONMENT CHARACTERISTICS:
  - 3-1.OPERATING TEMPERATURE:-25℃~+85℃.
  - 3-2.HUMIDITY:45~85% RH.

SCHEMATIC	1 3 2
Model	DC-037G

	MATERIAL	PLATING
terminal 1	Brass	tin
terminal 2	Phosphor Bronze	tin
terminal 3	Brass	tin
plastic	Pbt	

					ANGLAR	±5°	DSND		DATE		SCALE: N/A	MODEL TYPE: DC POWER JACK		
Δx					X.X	±0.2mm	DWN		DATE		VIEW:	PART NO.:		
Δx					X.XX	±0.1mm	CHKD		DATE		UNIT: mm	DWG NO.:		
Δx					X.XXX	±0.05mm	APPD		DATE		SIZE: A4	DC-037G		
MARK	DESCRIPTION	DATE	REVISED	APPROVED	UNSPECIFIED TOLERANCES							WEIGHT	SHEET	REVISION
www.switchsmt.com							<b>东莞市溪榜电子有限公司</b>					1.0g	1/1	A0