

Note:

1. Material:

1.1 Housing: PA9T

1.2 Contact: C5191, t=0.20mm

1.3 Shell: Kirsite

2. ELECTRICAL:

2-1: CURRENT RATING:

VBUS AND GND CONTACTS RATED AT 1.25A
PARALLEL FOR A TOTAL OF 5A;

2-2: INITIAL CONTACT RESISTANCE: 40 MEGOHMS

2-3: DIELECTRIC WITHSTANDING VOLTAGE:
100VAC MIN;

3: MECHANICAL CHARACTERISTICS:

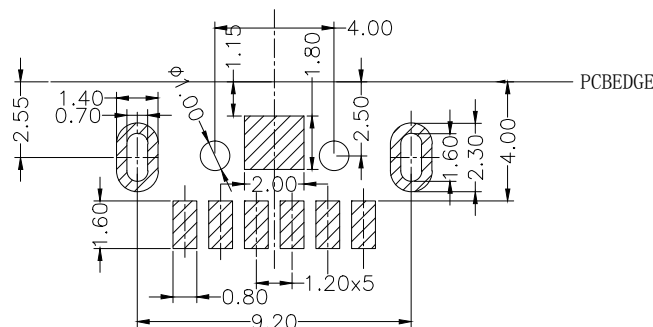
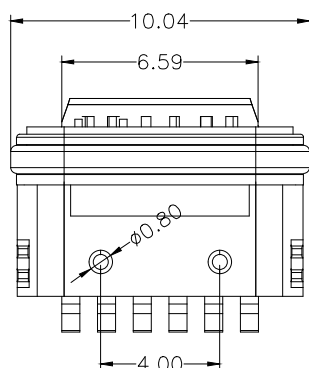
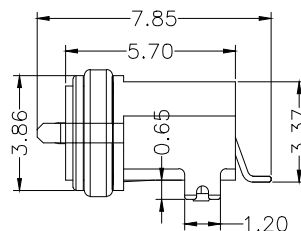
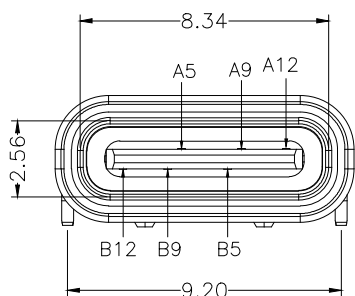
3-1: MATING FORCE: 5~20N

3-2: UNMATING FORCE: 8~20N (INITIAL),
6~20N (AFTER 10000 CYCLES)

3-3: FREQUENCY: 200±50 CYCLES / HOUR, 10000 CYCLES

3-4: OPERATING TEMPERATURE: -40° ~ 80° .

4: WATERPROOF: IP-X7.



PCB LAYOUT 图仅供参考

A5	CC1	B12	GND
A9	VBUS	B9	VBUS
A12	GND	B5	GND
PIN	SIGNAL NAME	PIN	SIGNAL NAME

东莞市溪榜电子有限公司
DONG GUAN XIBANG ELECTRONICS CO., LTD.

TOLERANCE: X.XX ±0.30 X.XXX ±0.20 X.XXX ±0.10 X.X ±0.10 X.X ±0.05	DRAWN BY :	DATE :	PART NAME: TYPE-C6P防水后两脚 卧式贴板U型粉末冶金L6.65	
		2015.08.18		
	CHECKED BY :	DATE :	PART NO.	SEE TABLE
		2015.08.18	MOLD NO.	
	APPROVED BY :	DATE :	DRAW NO.	
		2015.08.18	SHEET NO.	1 OF 1

UNIT: mm [inch]
SCALE: 1:1 SIZE: A4